

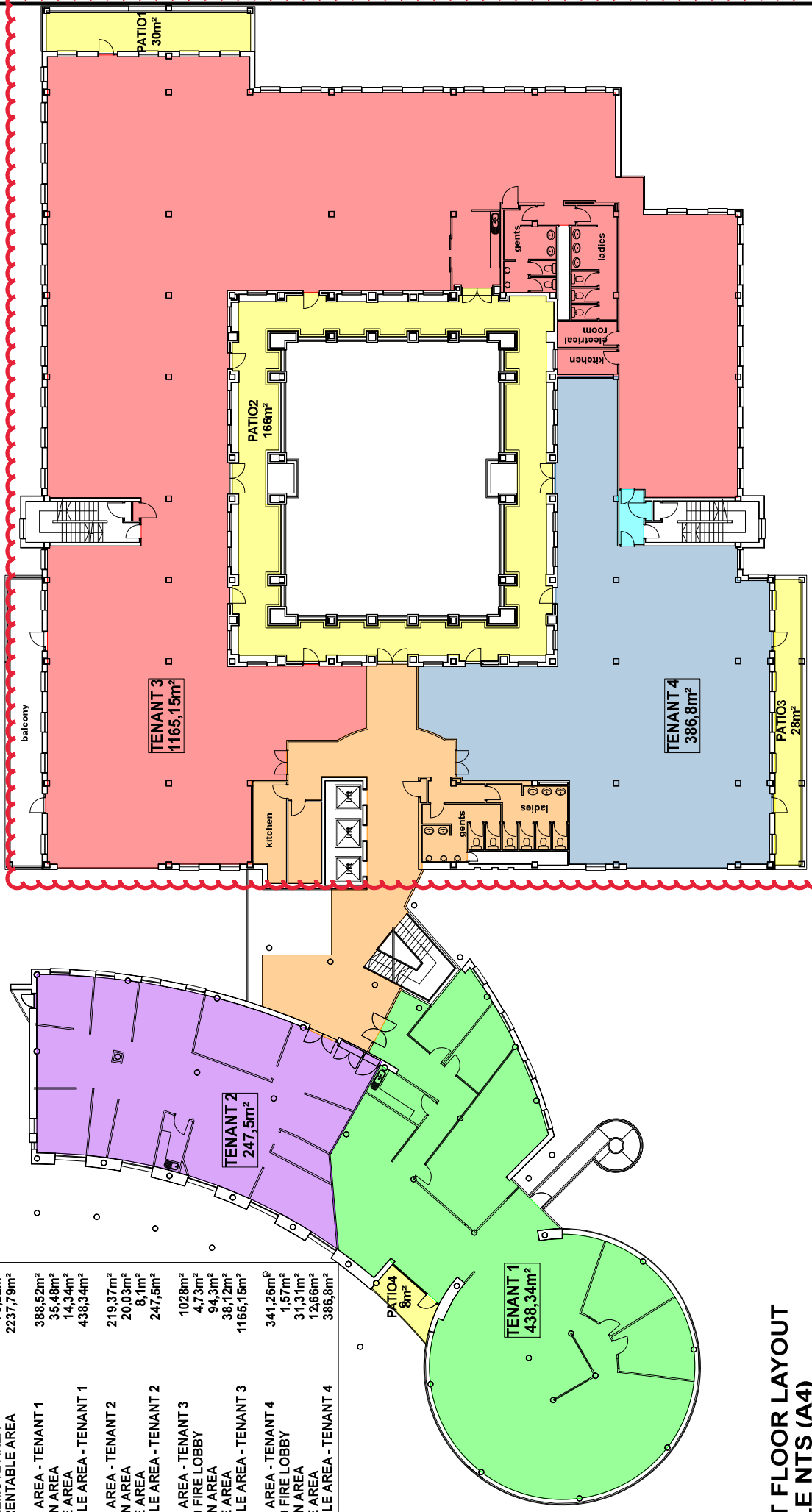
SUNNYSIDE BUILDING C

This plan is subject to fire consultants approval.

AREA SCHEDULE

TOTAL USABLE AREA	1983,45m ²
TOTAL COMMON AREA	181,12m ²
TOTAL REMOTE AREA	73,22m ²
TOTAL RENTABLE AREA	2237,79m ²
USABLE AREA - TENANT 1	388,52m ²
COMMON AREA	35,48m ²
REMOTE AREA	14,34m ²
RENTABLE AREA - TENANT 1	438,34m ²
USABLE AREA - TENANT 2	219,37m ²
COMMON AREA	20,03m ²
REMOTE AREA	8,1m ²
RENTABLE AREA - TENANT 2	247,5m ²
USABLE AREA - TENANT 3	1028m ²
SHARED FIRE LOBBY	4,73m ²
COMMON AREA	94,3m ²
REMOTE AREA	38,12m ²
RENTABLE AREA - TENANT 3	1165,15m ²
USABLE AREA - TENANT 4	341,26m ²
SHARED FIRE LOBBY	1,57m ²
COMMON AREA	31,31m ²
REMOTE AREA	12,66m ²
RENTABLE AREA - TENANT 4	386,8m ²

REVISION 13



FIRST FLOOR LAYOUT SCALE NTS (A4)



GROWTHPOINT
PROPERTIES

**PARKTOWN - AS BUILT DRAWING OF
BUILDING C, FIRST FLOOR LAYOUT,
JOHANNESBURG.**

