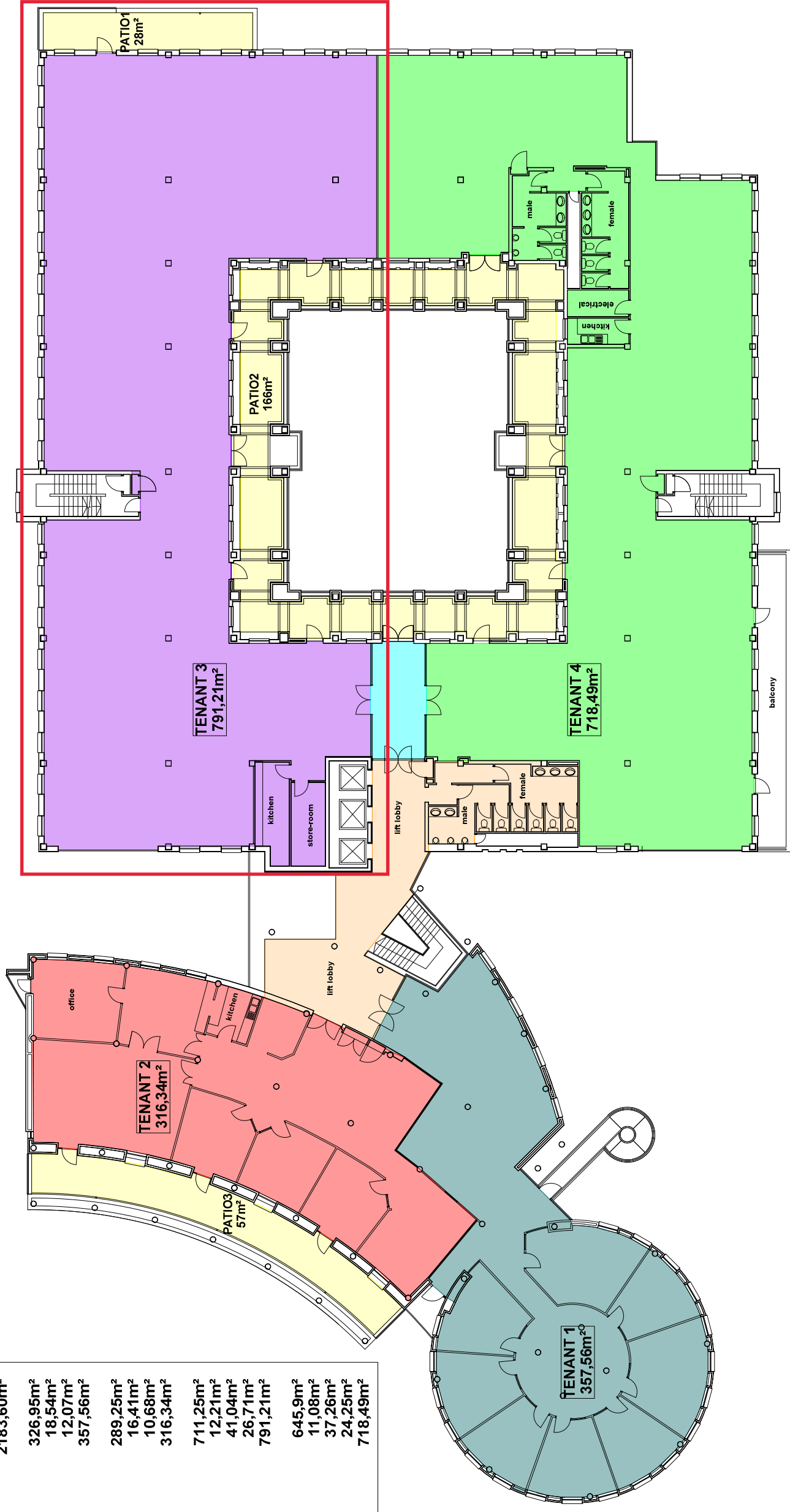


BUILDING C

AREA SCHEDULE

TOTAL USABLE AREA	1996,64m ²
TOTAL COMMON AREA	113,25m ²
TOTAL REMOTE AREA	73,71m ²
TOTAL RENTABLE AREA	2183,60m ²
USABLE AREA - TENANT 1	326,95m ²
COMMON AREA	18,54m ²
REMOTE AREA	12,07m ²
RENTABLE AREA - TENANT 1	357,56m ²
USABLE AREA - TENANT 2	289,25m ²
COMMON AREA	16,41m ²
REMOTE AREA	10,68m ²
RENTABLE AREA - TENANT 2	316,34m ²
USABLE AREA - TENANT 3	711,25m ²
SHARED ENTRANCE LOBBY	12,21m ²
COMMON AREA	41,04m ²
REMOTE AREA	26,71m ²
RENTABLE AREA - TENANT 3	791,21m ²
USABLE AREA - TENANT 4	645,9m ²
SHARED ENTRANCE LOBBY	11,08m ²
COMMON AREA	37,26m ²
REMOTE AREA	24,25m ²
RENTABLE AREA - TENANT 4	718,49m ²

REVISION 4



SECOND FLOOR LAYOUT SCALE NTS (A3)



GROWTHPOINT
PROPERTIES

**PARKTOWN - AS BUILT DRAWING OF
BUILDING C, SECOND FLOOR LAYOUT,
JOHANNESBURG.**

Arcrose
love your workspace
WWW.ARCROSE.CO.ZA