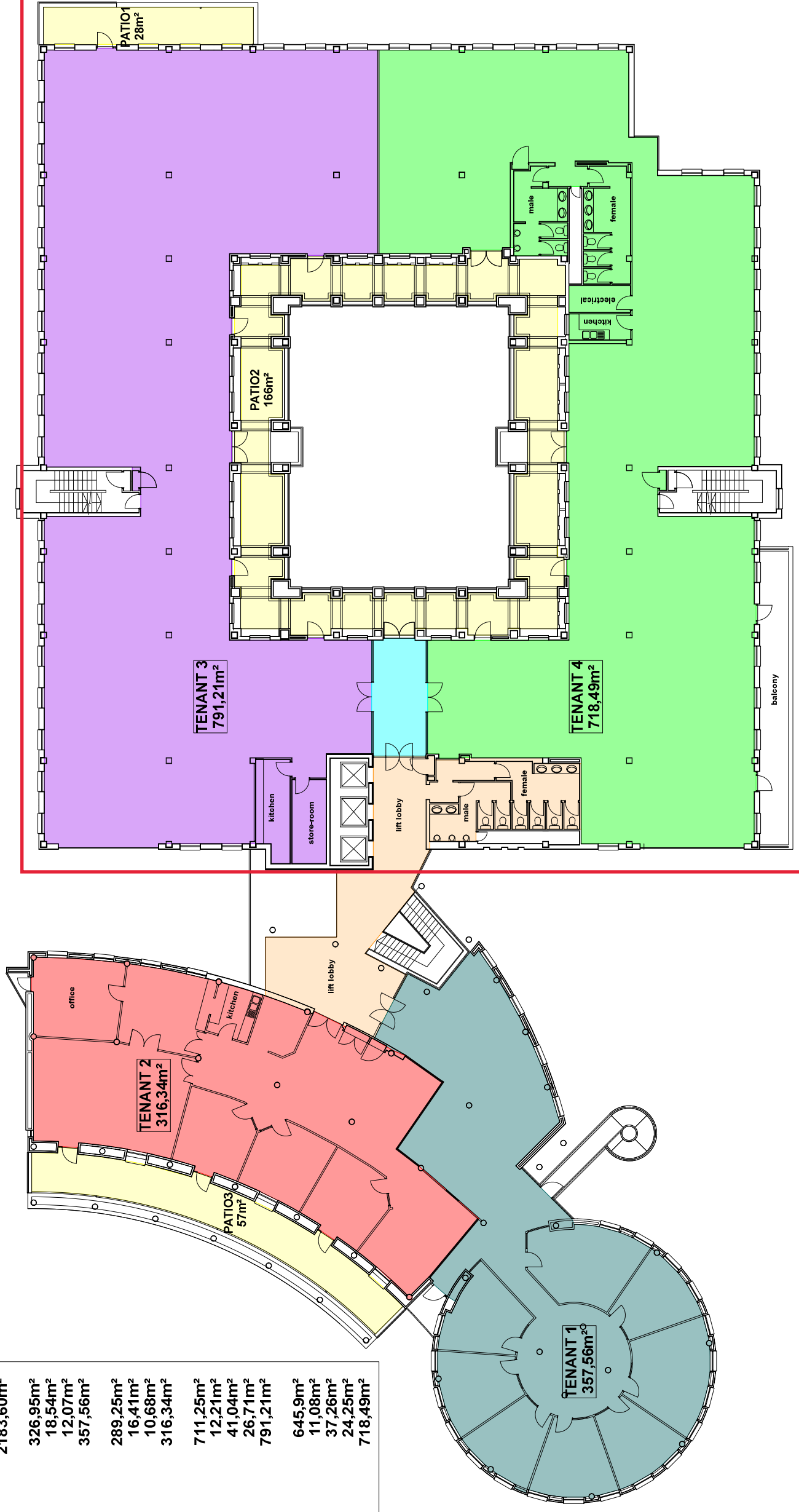


## BUILDING C

### AREA SCHEDULE

|                          |                       |
|--------------------------|-----------------------|
| TOTAL USABLE AREA        | 1996,64m <sup>2</sup> |
| TOTAL COMMON AREA        | 113,25m <sup>2</sup>  |
| TOTAL REMOTE AREA        | 73,71m <sup>2</sup>   |
| TOTAL RENTABLE AREA      | 2183,60m <sup>2</sup> |
| USABLE AREA - TENANT 1   | 326,95m <sup>2</sup>  |
| COMMON AREA              | 18,54m <sup>2</sup>   |
| REMOTE AREA              | 12,07m <sup>2</sup>   |
| RENTABLE AREA - TENANT 1 | 357,56m <sup>2</sup>  |
| USABLE AREA - TENANT 2   | 289,25m <sup>2</sup>  |
| COMMON AREA              | 16,41m <sup>2</sup>   |
| REMOTE AREA              | 10,68m <sup>2</sup>   |
| RENTABLE AREA - TENANT 2 | 316,34m <sup>2</sup>  |
| USABLE AREA - TENANT 3   | 711,25m <sup>2</sup>  |
| SHARED ENTRANCE LOBBY    | 12,21m <sup>2</sup>   |
| COMMON AREA              | 41,04m <sup>2</sup>   |
| REMOTE AREA              | 26,71m <sup>2</sup>   |
| RENTABLE AREA - TENANT 3 | 791,21m <sup>2</sup>  |
| USABLE AREA - TENANT 4   | 645,9m <sup>2</sup>   |
| SHARED ENTRANCE LOBBY    | 11,08m <sup>2</sup>   |
| COMMON AREA              | 37,26m <sup>2</sup>   |
| REMOTE AREA              | 24,25m <sup>2</sup>   |
| RENTABLE AREA - TENANT 4 | 718,49m <sup>2</sup>  |

## REVISION 4



## SECOND FLOOR LAYOUT SCALE NTS (A3)