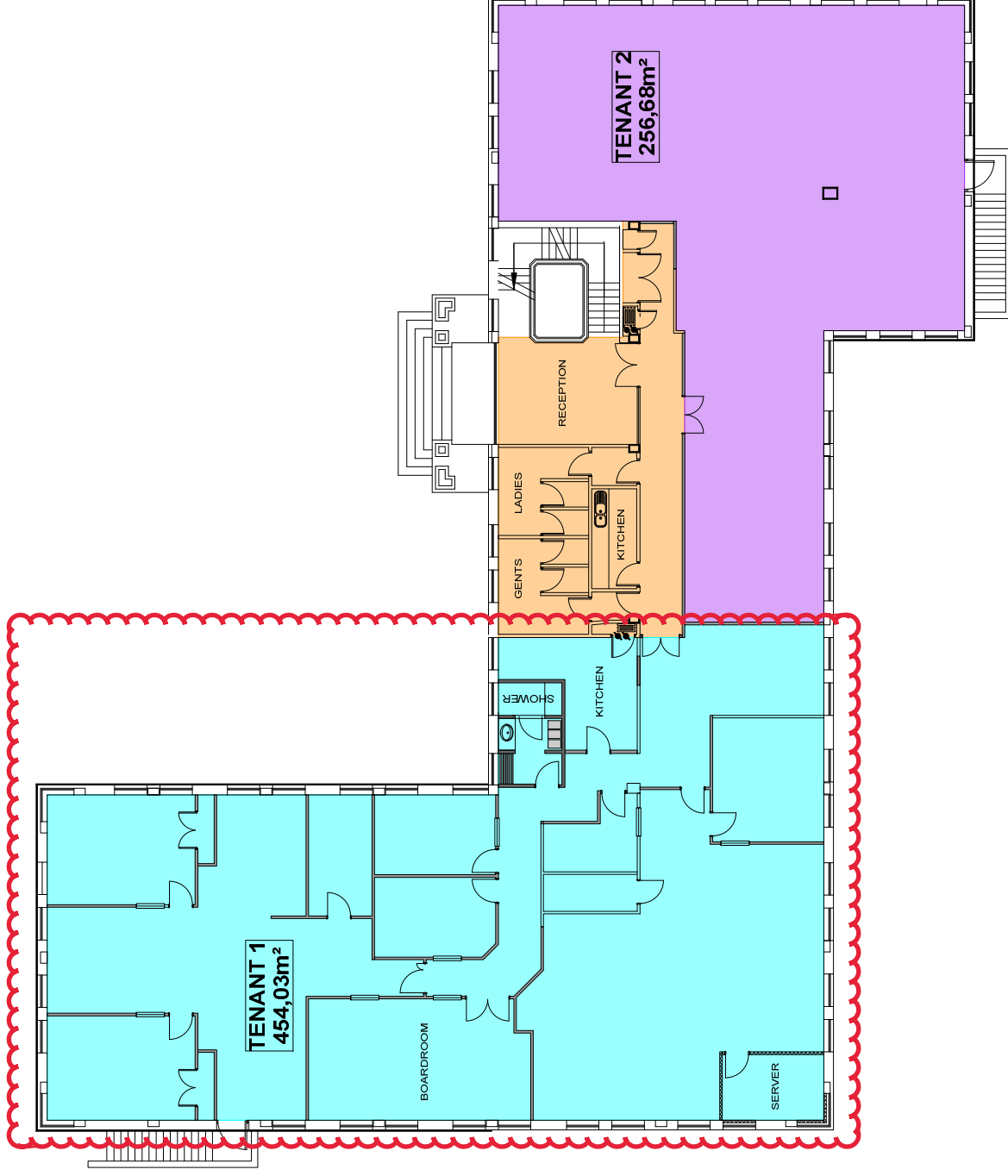


257 OXFORD ROAD

This plan is subject to fire approval.

AREA SCHEDULE	
TOTAL USABLE AREA	602,5m ²
TOTAL COMMON AREA	77,5m ²
TOTAL REMOTE AREA (BUILDING)	13,31m ²
TOTAL REMOTE AREA (PARK)	17,40m ²
TOTAL RENTABLE AREA	710,71m ²
USABLE AREA - TENANT 1	384,9m ²
COMMON AREA	49,51m ²
REMOTE AREA (BUILDING)	8,5m ²
REMOTE AREA (PARK)	11,12m ²
RENTABLE AREA- TENANT 1	454,03m ²
USABLE AREA - TENANT 2	217,6m ²
COMMON AREA	27,99m ²
REMOTE AREA (BUILDING)	4,81m ²
REMOTE AREA (PARK)	6,28m ²
RENTABLE AREA- TENANT 2	256,68m ²

REVISION 13



**BUILDING 3
FIRST FLOOR LAYOUT
SCALE NTS (A4)**

GROWTHPOINT
PROPERTIES

**COMPREHENSIVE AREA SCHEDULE OF THE
257 OXFORD ROAD OFFICE PARK IN ILLOVO
JOHANNESBURG.**

Arcrose
love your workspace
www.arcrose.co.za